



TOWN OF BOSTON

JASON A. KEDING
Supervisor

MICHAEL A. CARTECHINE
JENNIFER L. LUCACHIK
KELLY L. MARTIN
KATHLEEN SELBY
Town Board

SANDRA L. QUINLAN
Town Clerk - Tax Collector

ROBERT J. TELAAK
Highway Supt.

DEBRA K. BENDER
KYLE CALABRESE
Town Justice

SEAN COSTELLO
Town Attorney

LAURIE BAKER
Prosecutor

SUE FITZNER
Assessor

THOMAS MURPHY
Code Enforcement Officer

TO: Planning Board
Town Clerk
Code Enforcement Officers

Town Supervisor
Highway Superintendent
Town Assessor

Town Board Members
Town Attorney
Planning Consultant

AGENDA

PLANNING BOARD MEETING

February 14, 2023 at 7:30pm

Town Hall – Court Room

- 1) Call meeting to order
- 2) Approval of Minutes
December 2022
- 3) New Business
 - a. Planning Board Elections
- 4) Old Business –
 - a. 7072 Boston State Rd LLC – Requesting Planning Board review of a proposal to construct a 5,183 sq.ft. building consisting of a convenient store with fuel and a Tim Horton's with drive-thru, as well as a 6,000 sq.ft. office building at 7072 Boston State Rd.
- 5) Reports
 - a. Planning Consultant
 - b. Town Attorney
 - c. Town Board Liaison
 - d. Board Clerk
- 6) Motion to adjourn

TOWN HALL
(716) 941-6113
Fax (716) 941-6116

TOWN SUPERVISOR
(716) 941-6518
Fax (716) 941-9264

TOWN COURT
(716) 941-6115
Fax (716) 941-5169

HIGHWAY GARAGE
(716) 941-5869
Fax (716) 941-3677

NUTRITION PROGRAM
(716) 941-5773

The Town of Boston is an equal opportunity provider and employer.

If you wish to file a Civil Rights program complaint of discrimination, complete the USDA Program Discrimination Complaint Form, found online at http://www.ascr.usda.gov/complaint_filing_cust.html, or at any USDA office, or call 1-866-632-9992 to request the form. You may also write a letter containing all of the information requested in the form. Send your completed complaint form or letter to us by mail at U.S. Department of Agriculture, Director, Office of Adjudication, 1400 Independence Avenue, S.W., Washington, D.C. 20250-9410 or fax 202-690-7442 or e-mail at program.intake@usda.gov.

Planning Board 2022.12.13
Meeting minutes_draft

Attendees: Dr. Paul Ziarnowski, Jim Liegl, David Stringfellow, David Bowen,
Attorney Sean Costello, Planning Consultant Sarah DeJardins
Absentee: Gary Stisser, Elizabeth Schutt, Town Liaison Jennifer Lucachik, Jay Jackson

1. CALL MEETING TO ORDER

Meeting called to order by Dr Ziarnowski at 730pm

2. APPROVAL OF MINUTES

October

Motion made to accept the minutes by Mr. Stringfellow

2ND by Mr. Liegl

APPROVED

3. OLD BUSINESS

- a. 7072 Boston State Rd LLC – Requesting Planning Board review of a proposal to construct a 5,183 sq.ft. building consisting of a convenient store with fuel and a Tim Horton's with drive-thru, as well as a 6,000 sq.ft. office building at 7072 Boston State Rd.

Mr. Ziarnowski recapped on how this was left to review to Town Board. Ms. DesJardins received info back regarding discussion with Chris Wood, presenter for 7072 Boston State Rd. Ms. DesJardins did the review and received comments DEC and they were all same standard comments from the other project with nothing out of the ordinary. Response from Erie County Department of Planning, same thing and then received response from DOT. The traffic study was done and sent to DOT to review. No negative comments.

Mr. Ziarnowski asked about the positive and negative comments from each agency from Chris Wood. (recording at 02:53) Chris Wood provided highlights.

Mr. Ziarnowski asked if there was anything brought up about the gas tanks and Eighteen Mile Creek. RESPONSE: no.

(recording 04:09) Info regarding County Sewer.

Mr. Ziarnowski ask if there were any questions from the Board. None currently.

(recording 05:17) info received back from DOT read by Chris Wood.

Mr. Ziarnowski asked about the driveway to the new location. Chris Wood responded that they would push as far East as possible.

Ms. DesJardins commented about letting SRF review the DOT comments and go back and forth and then relay. If ready in January, might want to forward a recommendation to Town Board.

Mr. Liegl had further discussion about the turning lanes – Right and Left.

Mr. Ziarnowski asked more about parking. (recording 08:41) Employees park at the office building.

Would be nice to have outside tables was recommended by Mr. Ziarnowski.

No motion to be made at this meeting and then come back with more information.

Kris Winkler/LaBella – Town Engineer present at this meeting.

4. NEW BUSINESS

None

5. REPORTS

- a. Planning Consultant – Nothing new from applicant and Solar Panels
- b. Town Attorney – (recording 14:20) In January, the Town Board will take action regarding Local Law updating our Code Enforcement laws/codes
- c. Town Board Liaison - absent
- d. Board Clerk - none

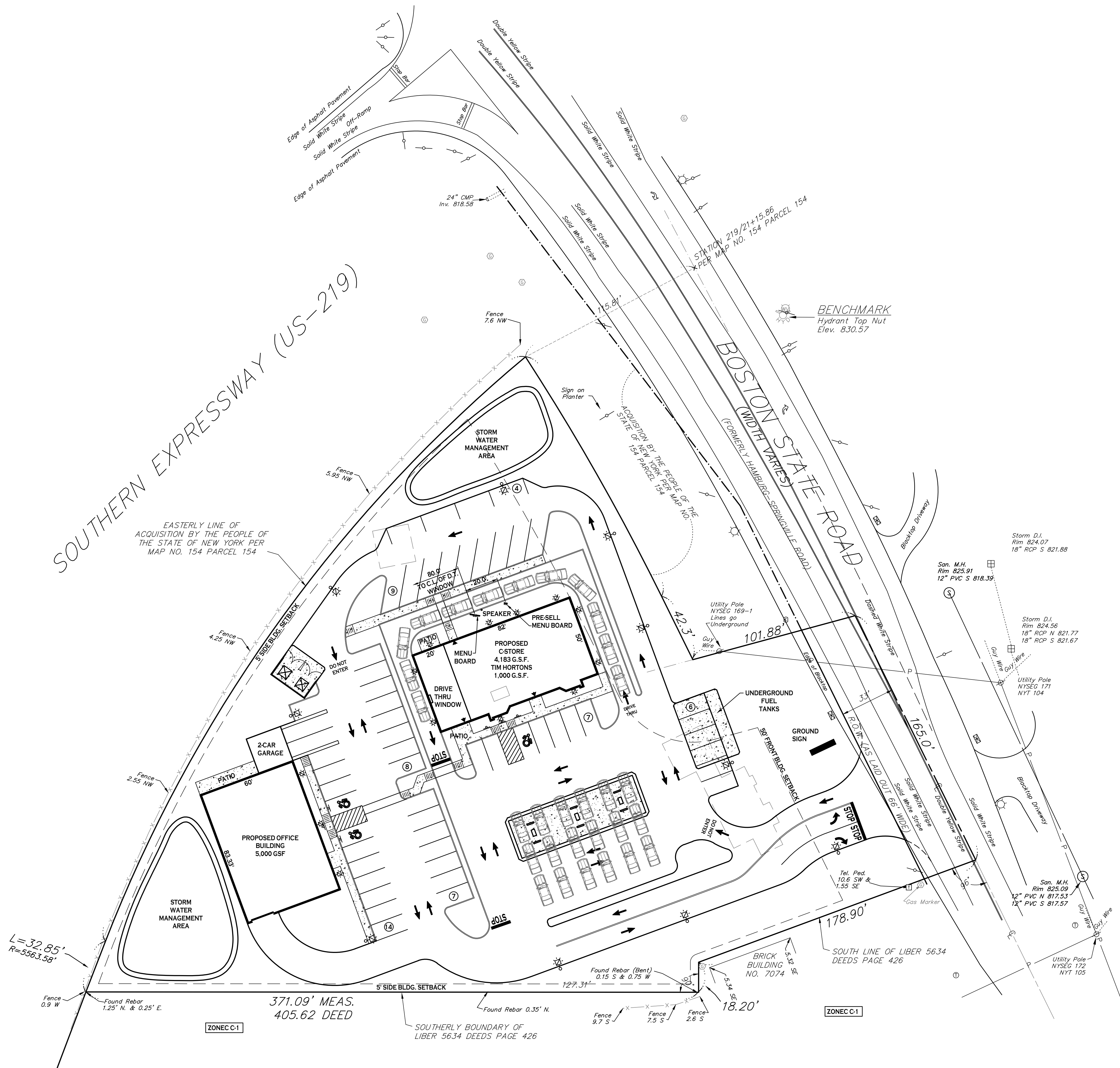
6. MOTION TO ADJOURN

Motion made to close meeting by Mr. Liegl
2nd by Ms. Weiss

APPROVED

All Rights Reserved. Reuse of these documents without the expressed written permission of CARMINA WOOD DESIGN is prohibited. Warning: It is a violation of article 45 of the New York State Education Law to alter this drawing, or altered such R.A., P.E. or L.L.S. shall affix his or her seal, signature, the date, the nature, altered by and a specific description of the alteration.

© CARMINA WOOD DESIGN



SITE DATA		
SITE AREA = 2.5± AC		
ZONED: C-1 - LOCAL RETAIL BUSINESS DISTRICT		
DESCRIPTION: 5,000 SF OFFICE BLDG., 5,183 SF C-STORE & RESTAURANT W/FUEL PUMPS		
SETBACKS - BUILDING		
FRONT:	REQUIRED: 50 FT	PROVIDED: 50.0 FT MIN.
SIDE (ABUTTING COMM.):	0 FT OR 5 FT *	> 5 FT
SIDE (ABUTTING RES.):	20 FT OR HGT. OF BLDG.	N/A
REAR:	30 FT OR HGT. OF BLDG.	> 30 FT
SETBACKS - PARKING		
FRONT:	20 FT	20 FT MIN.
SIDE/REAR (ABUTTING COMM.):	NONE	25 FT MIN.
SIDE/REAR (ABUTTING RES.):	10 FT	45 FT MIN.
GREENSPACE		
TOTAL SITE:	NONE	X.X AC (XX%)
PARKING (10' x 20')		
# OF SPACES - SEE CALCULATION BELOW	54	55 SPACES 2 GARAGE 57 SPACES
MAX. BUILDING HEIGHT	35 FT	< 35 FT
LOT COVERAGE	40% (43,560 SF)	10.3% (11,183 SF)

* 25 FT IS USED FOR VEHICULAR INGRESS OR EGRESS

PARKING CALCULATION:

"RETAIL"
REQ'D PARKING = 1 SPACE PER 200 GSF
= 4,183 GSF / 200 = 21 SPACES

"RESTAURANT"
REQ'D PARKING = 2 SPACES PER 5 SEATS
= (20 SEATS / 5) x 2 = 8 SPACES

"OFFICE"
REQ'D PARKING = 1 SPACE PER 200 GSF
= 5,000 GSF / 200 = 25 SPACES

TOTAL = 54 SPACES

SITE LEGEND	
PROPERTY LINE	---
PROPOSED CONCRETE CURB	=====
PROPOSED CONCRETE SIDEWALK	-----
PROPOSED SIGN	■
PROPOSED PARKING NUMBER	27
PROPOSED LIGHT POLE FOUNDATION	⊗
PROPOSED WALL-MOUNTED LIGHT	⊕

NOTE: BOUNDARY AND TOPOGRAPHIC INFORMATION PROVIDED BY OTHERS. CARMINA WOOD DESIGN ASSUMES NO RESPONSIBILITY FOR ITS ACCURACY.

SITE PLAN
SCALE: 1"=30'



CARMINA WOOD DESIGN
111 Bain Street, Suite 332
Greenville, SC 29615
Phone: (336) 937-9089

1487 Main Street, Suite 500
Greenville, SC 29615
Phone: (716) 842-3165

Mixed-use Development
7072 Boston State Road
Boston, New York

REVISIONS:	No.	Description	Date

PRELIMINARY
NOT FOR CONSTRUCTION

DRAWING NAME:
Concept Site Plan

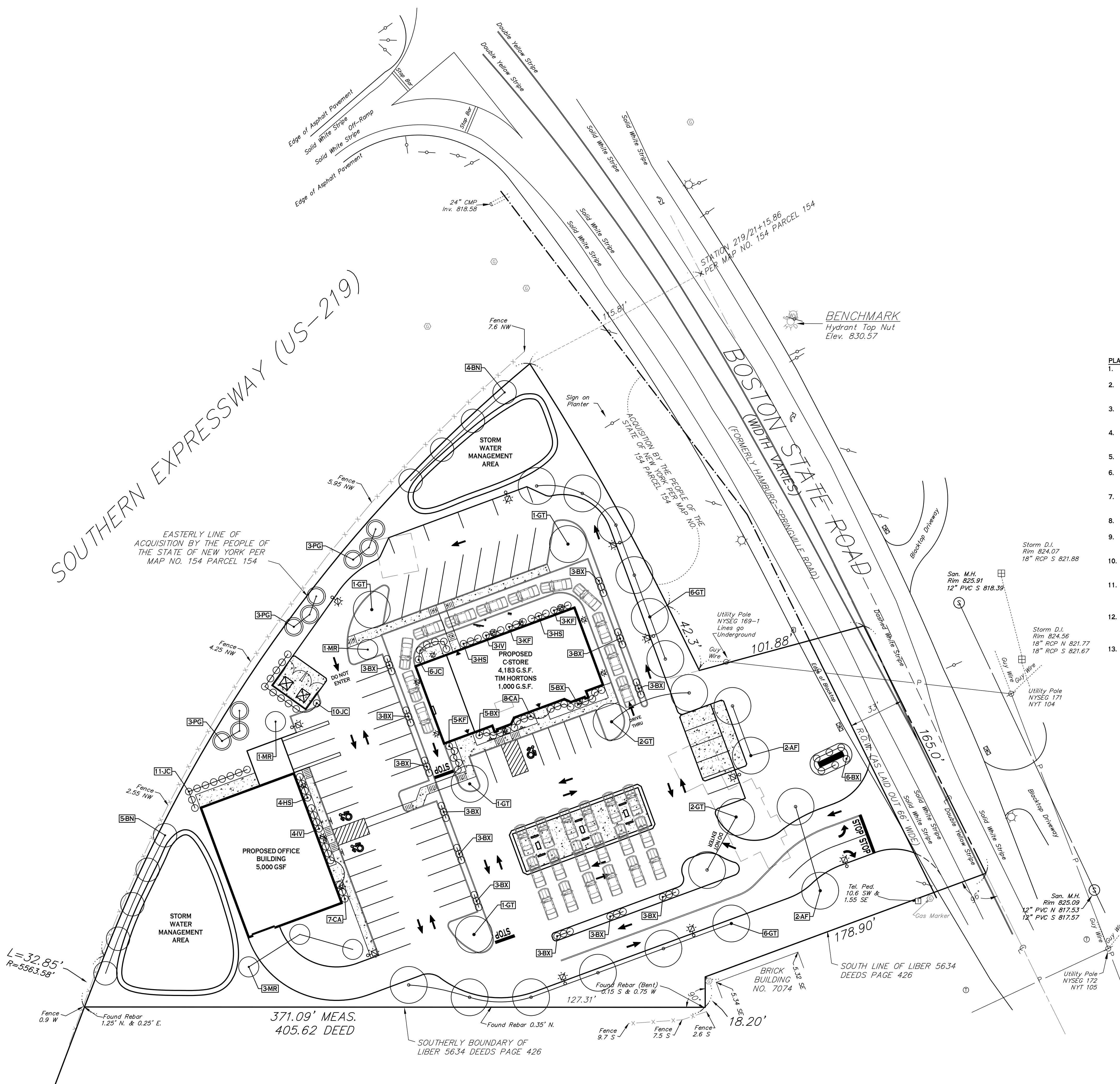
Date: 12/15/22
Drawn By: C. Wood
Scale: As Noted

DRAWING NO.
C-100
Project No: 22.305

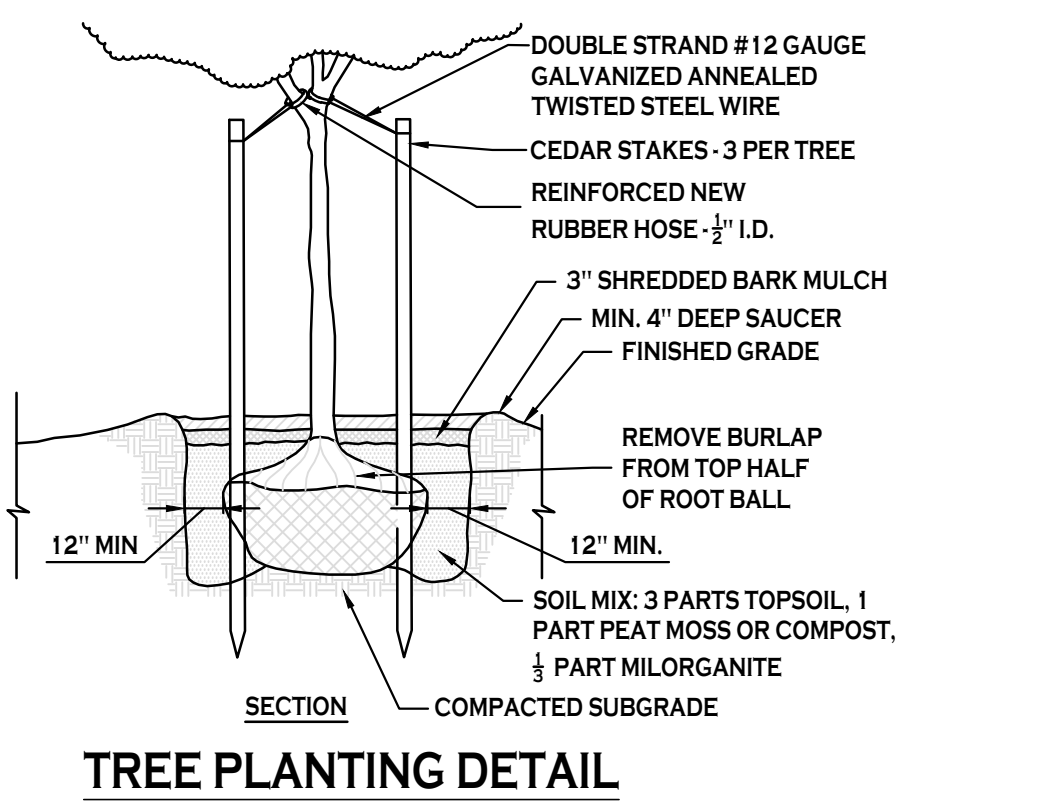
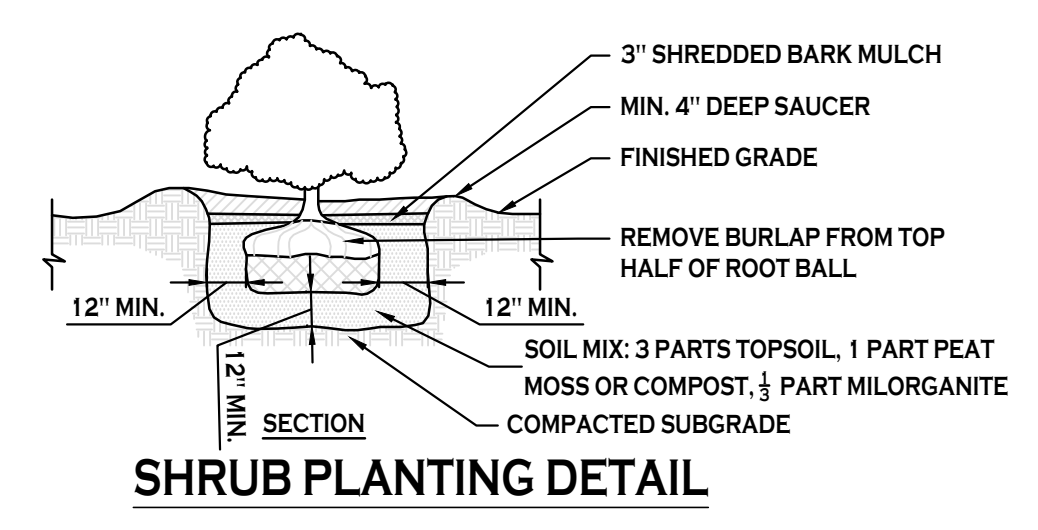
All Rights Reserved. Reuse of these documents without the expressed written permission of CARMINA WOOD DESIGN is prohibited. WARNING: It is a violation of article 45 of the New York State Environmental Conservation Law to alter this drawing, in altered such R.A., P.E. or L.L.S. shall affix his or her seal, signature, the date, the notation "Altered By" and a specific description of the alteration.

© CARMINA WOOD DESIGN

SOUTHERN EXPRESSWAY (US-219)



SITE PLAN
SCALE: 1"=30'



- PLANTING NOTES:**
- CONTACT DIG SAFELY NY (811 OR (800) 962-7962) TO LOCATE EXISTING UTILITIES PRIOR TO ANY LANDSCAPE CONSTRUCTION.
 - LANDSCAPE CONTRACTOR SHALL SUPPLY ALL MATERIALS FOR THE COMPLETION OF ALL LANDSCAPE WORK ITEMS ASSOCIATED WITH THIS INSTALLATION PER LANDSCAPE PLANS AND DETAILS.
 - LANDSCAPE CONTRACTOR SHALL COORDINATE WITH THE OWNER'S REPRESENTATIVE AND LANDSCAPE ARCHITECT ANY FIELD ADJUSTMENTS OF PLANT LOCATIONS THAT ARE IN CONFLICT WITH EXISTING VEGETATION, UNDERGROUND OBSTRUCTIONS OR UTILITIES.
 - DURING CONSTRUCTION, ALL EXISTING TREES TO BE PRESERVED SHALL BE PROTECTED WITH FENCING WHICH SHALL BE AT THE DRIP EDGE OF THE EXISTING TREES TO BE PRESERVED.
 - PLANT SUBSTITUTIONS ARE NOT PERMITTED UNLESS APPROVED IN ADVANCE BY THE LANDSCAPE ARCHITECT.
 - PROVIDE QUANTITY, SIZE, GENUS, SPECIES AND VARIETY OF PLANTS INDICATED COMPLYING WITH APPLICABLE REQUIREMENTS OF ANSI Z60.1, LATEST EDITION.
 - SUPPLY AND APPLY FERTILIZER TABLETS (AGRIFORM 20-10-5 OR EQUIVALENT) TO ALL DECIDUOUS AND EVERGREEN TREES, SHRUBS, AND PERENNIALS PER MANUFACTURER'S SPECIFICATIONS.
 - PROVIDE A 3' DIAMETER MULCHED RING AROUND ALL TREES, WITH A SPADE CUT EDGE WHERE RING MEETS LAWN.
 - SUPPLY AND INSTALL SHREDDED HARDWOOD MULCH (WITH NO ADDED COLOR) IN ALL TREE RINGS TO A DEPTH OF 3" AND IN PLANT BED AREAS TO A DEPTH OF 2". DO NOT ALLOW MULCH TO CONTACT OR BURY TRUNKS/STEMS.
 - LANDSCAPE CONTRACTOR SHALL REPAIR ANY AREAS WITHIN OR OUTSIDE OF THE PROJECT LIMITS THAT ARE DAMAGED BY CONSTRUCTION ACTIVITIES. DISTURBED LAWN AREAS SHOULD BE DECOMPACTED AS NECESSARY AND RECEIVE TOPSOIL, SEED, & MULCHED.
 - THE LANDSCAPE CONTRACTOR SHALL WARRANT ALL TREES FOR A PERIOD OF TWELVE MONTHS FROM THE DATE OF SUBSTANTIAL COMPLETION. LANDSCAPE CONTRACTOR SHALL INSPECT SITE AT THE END OF THE WARRANTY PERIOD AND MAKE ANY NECESSARY PLANT REPLACEMENTS. REMOVE ANY STAKES AND BELTING FROM TREES, ADJUST TREES THAT ARE NOT STRAIGHT, ETC.
 - THE LANDSCAPE CONTRACTOR SHALL MAINTAIN TREES UNTIL SUBSTANTIAL COMPLETION ACCEPTANCE. MAINTAIN PLANTS BY: WATERING WEEKLY WHEN RAINFALL IS LESS THAN 1" PER WEEK; REMOVING WEEDS FROM PLANT BEDS AND TREE RINGS; MAINTAINING INTEGRITY OF ANY STAKES; REPOSITIONING ANY PLANTS THAT ARE LEANING.
 - PLAN NOTES ARE NOT INTENDED TO BE A SUBSTITUTE FOR APPROVAL OF INSTALLATION PRACTICES OF THE CONTRACTOR.

PLANTING SCHEDULE - MIXED-USE DEVELOPMENT, 7072 BOSTON STATE ROAD, BOSTON NY

KEY	QTY.	BOTANICAL NAME	COMMON NAME	MIN. SIZE	REMARKS
DECIDUOUS TREES					
AF	4	ACER X FREEMANNI 'JEFFERSRED'	AUTUMN BLAZE MAPLE	2 1/2" - 3" CAL.	B&B
BN	9	BETULA NIGRA 'CULLY'	HERITAGE RIVER BIRCH	10'-12" HT.	B&B; MULTI-STEM (3-BOLE MIN)
GT	20	GLEDISIA TRICANTHOS INERMIS 'SKYCOLE'	SKYLINE THORNLESS HONEYLOCUST	2 1/2" - 3" CAL.	B&B; HT. OF 45' & 45' WIDE
SMALL/ORNAMENTAL TREES					
MR	5	MALUS 'RED JEWEL'	RED JEWEL CRABAPPLE	1-3/4" - 2" CAL.	B&B
EVERGREEN TREES					
PG	9	PICEA GLAUCA	WHITE SPRUCE	5' MIN. HT.	B&B, FULL TO GROUND
SHRUBS					
BX	52	BUXUS 'GREEN VELVET'	GREEN VELVET BOXWOOD	24" HT. MIN.	NO. 5 CONT.
CA	15	CLETHRA ALNIFOLIA SUGARTINA 'CRYSTALINA'	SUGARTINA CRYSTALINA SUMMERSWEET		NO. 5 CONT.
HS	10	HYDRANGEA SERRATA 'SMINMAKTR'	TUFF STUFF RED HYDRANGEA		NO. 3 CONT.
IV	7	ITEA VIRGINICA 'SMINVOFC'	SCENTLANDIA ITEA		NO. 3 CONT.
JC	26	JUNIPERUS CHINESIS 'HETZJI'	HETZ STAKED JUNIPER	4' MIN. HT.	B&B, FULL TO GROUND
ORNAMENTAL GRASS					
KF	11	CALAMAGROSTIS X ACUTIFOLIA 'KARL FOERSTER'	KARL FOERSTER FEATHER REED GRASS	NO. 2 CONT.	SEE NOTE 1

- LANDSCAPE NOTES:**
- ORNAMENTAL GRASSES SHOULD BE PRUNED BACK IN LATE FALL OR EARLY SPRING TO ALLOW FOR NEW FOLIAGE TO GROW IN SPRING.
 - ALL PLANTING BEDS & TREE PLANTING PITS SHALL RECEIVE A MINIMUM 3-INCH DEPTH OF DARK SHREDDED HARDWOOD BARK MULCH.
 - ALL EVERGREEN TREES SHALL BE MEASURED FROM THE BOTTOM OF LEADER.

NOTE: BOUNDARY AND TOPOGRAPHIC INFORMATION PROVIDED BY OTHERS. CARMINA WOOD DESIGN ASSUMES NO RESPONSIBILITY FOR ITS ACCURACY.



CARMINA WOOD DESIGN
111 Bain Street, Suite 332
Greenwich, NY 11548
Phone: (516) 937-9009

Mixed-use Development
7072 Boston State Road
Boston, New York

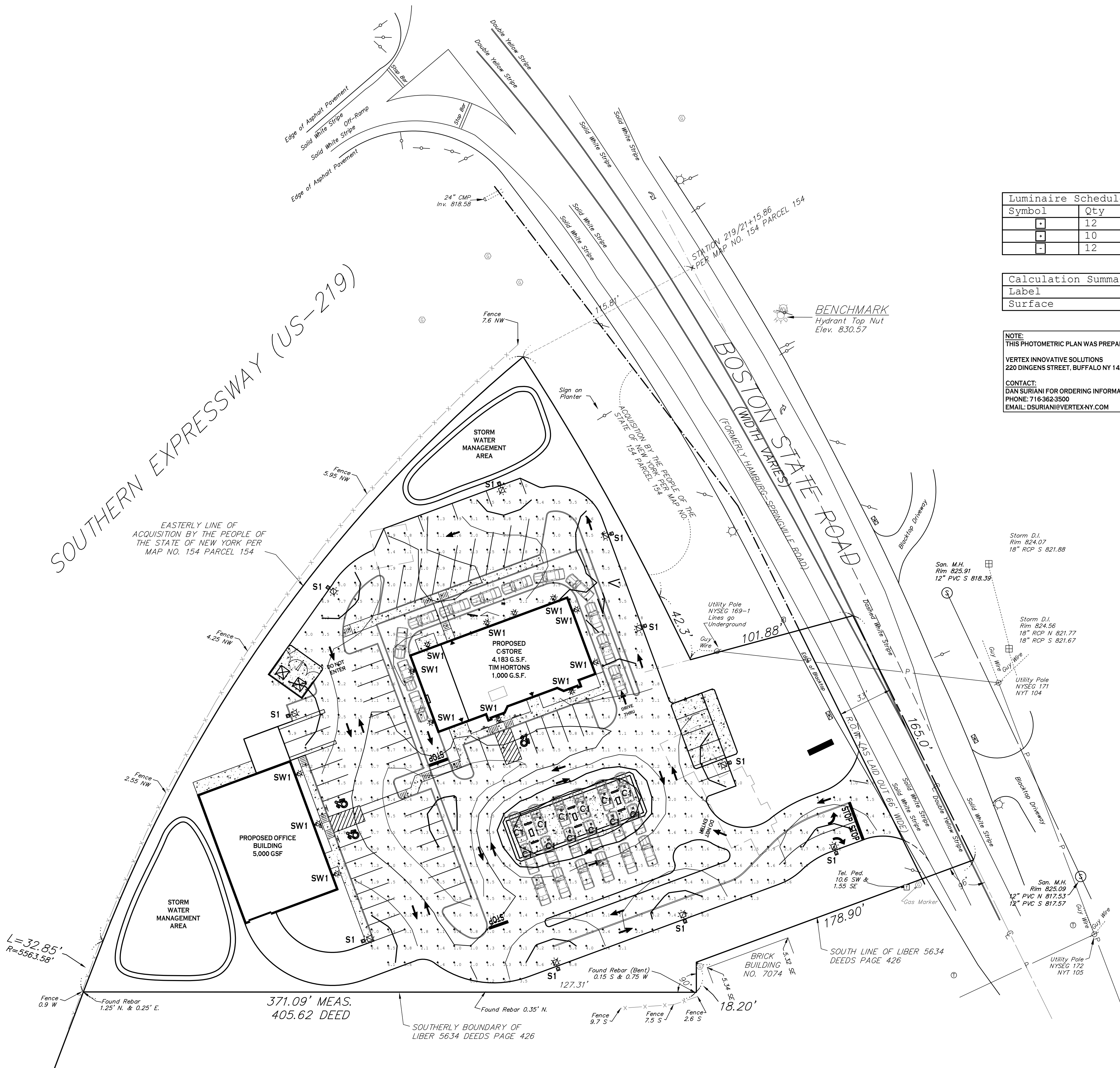
REVISIONS:	No.	Description	Date

PRELIMINARY
NOT FOR CONSTRUCTION

DRAWING NAME:
Landscape Plan

Date: 12/15/22
Drawn By: C. Wood
Scale: As Noted

DRAWING NO.
L-100
Project No: 22.305



Luminaire Schedule			
Symbol	Qty	Label	Description
□	12	C1	SCP-S-36-P-VS-4K (CANOPY LIGHT) M.H. 15'
□	10	S1	RXA-150-4-VS-4K-BR-A (SITE LIGHT POLE) M.H. 20'
□	12	SW1	WLZ2-4-4K (BUILDING WALL PACK) M.H. 12'

Calculation Summary					
Label	CalcType	Units	Avg	Max	Min
Surface	ILLUMINANCE	Fc	3.05	18.6	0.2

NOTE:
THIS PHOTOMETRIC PLAN WAS PREPARED BY:
VERTEX INNOVATIVE SOLUTIONS
220 DINGENS STREET, BUFFALO NY 14206
CONTACT:
DAN SURIANI FOR ORDERING INFORMATION.
PHONE: 716-362-3500
EMAIL: DSURIANI@VERTEXNY.COM

REVISIONS:	
No.	Description

PRELIMINARY
NOT FOR CONSTRUCTION

DRAWING NAME:
Lighting Plan

Date: 12/15/22
Drawn By: C. Wood
Scale: As Noted

DRAWING NO.:

LP-100

Project No: 22.305

NOTE: BOUNDARY AND TOPOGRAPHIC INFORMATION PROVIDED BY OTHERS. CARMINA WOOD DESIGN ASSUMES NO RESPONSIBILITY FOR ITS ACCURACY.



SITE PLAN
SCALE: 1"=30'

DESCRIPTION

The RxA Series LED area luminaire features a sleek low-profile housing design in lumen packages ranging from 9600 lumens to 41,000 lumens. Its high-efficiency light engine is designed for optimal light control and illumination with its three distribution types in three physical sizes. The RxA family provides substantial energy savings through efficient delivery of light with minimal to no uplight and efficacies up to 139 LPW. International Dark Sky friendly approved in 3000K configurations (with fixed downlight mount). The RxA ships standard with a 7" upswept arm, and is designed for ease of installation on poles, slipfitters, trunnion or wall mount applications. This product is ideal for large areas such as parking lots, walkways, roadways, building walls, etc.

SPECIFICATIONS

Construction:

- Sleek die-cast aluminum housing with stainless steel hardware and powder coated bronze (standard) finish for durability
- UV-stabilized polycarbonate optical lens
- Integral heat sink fins maximize heat dissipation
- Hinged driver access for ease of maintenance
- Standard with 7" straight arm for square pole or round pole (with round pole adaptor). Wall mount adapter is also available
- Slotted bolt pattern suitable for retrofit to most existing drill hole patterns
- Includes a 12" whip (5 conductors provided for convenience, dimming leads not connected)

Optics/LEDs:

- Designed with minimal uplight to eliminate light pollution
- 70 to 300 Watts replace up to 750 Watts HID for up to 70% energy savings
- Efficacies up to 139 LPW maximize energy savings and utility rebates
- Type III, IV and V distributions optimize light distribution
- Available in 3000K, 4000K and 5000K CCT
- L70 of 130,000 hours
- CRI ≥70

Electrical:

- Class 2 power supply, 120-277VAC, 50/60Hz
- 1-10V Dimming driver for models 150W+ (120-277VAC only), dimming leads require connection in field
- Power supply with high-power factor of 90% typical
- 347/480VAC Dedicated driver option for 70W, 150W, 200W and 300W
- Standard 10kVA surge protection for models ≥150W

Testing & Compliance:

- cULus Listed for Wet Locations
- Tested to meet IP66 requirements
- DesignLights Consortium® (DLC) PREMIUM Qualified (consult QPL for qualified models)
- Operating temperature: -40°C to 45°C (-40°F to 113°F)
- International Dark Sky friendly approved product. (IDA) 3000K only (compliant only with a fixed downlight mount)

Installation:

- Hinged driver door for ease of access
- Standard with pole mount arm (7") suitable for 4" or 5" square poles. Includes round pole adaptor. Arm features access door for easy wiring on site and includes knockouts for motion and photocontrol sensors
- Additional easy mount accessories such as slipfitter, trunnion, swivel and wall bracket

Model: _____ Date: _____
Accessories: _____
Job Name: _____ Type: _____



Shown with included 7" arm and round pole adaptor



Specs at a Glance					
Model	RxA-70	RxA-100	RxA-150	RxA-200	RxA-300
Wattage*	70	100	150	200	300
Lumens (lm)	9600	13,800	20,800	25,700	41,000
Efficacy (LPW)	136	137	139	139	137
Equivalency (HID)	150/175W	250W	400W	400W	750W+
Distribution	Type III, IV, V				
CCT (K)	3000K, 4000K, 5000K				
CRI	>70				
Input Voltage	120-277VAC, 50/60Hz, 347/480VAC				
Operating Temp	-40°C to 45°C (-40°F to 113°F)				
Certifications	UL Listed for Wet Locations, DLC PREMIUM				
Warranty	5 Years				
Weight	8.9 lbs	9.4 lbs	12.4 lbs	12.9 lbs	18.7 lbs

* Nominal Wattage. Tested at 5000K CCT, 120-277VAC, Type III distribution. See performance table for more detailed lumen information.

Note: Environment and application will affect actual performance. Typical values and 25°C used for testing.

Options:

- Integral 120-277VAC dimming sensor (SC) for models 150W+
- 120-277VAC Twist Lock receptacle installed on arm (Twist Lock photocontrol included)

Accessories:

- Twist Lock universal photocontrol (120-277VAC) for dusk to dawn lighting control
- Dimming sensor for additional energy savings
- Button photocontrol (120-277VAC) for 70W and 100W models
- Multiple mounting accessories available, see ordering information

Warranty:

- Five Year Warranty (Terms and Conditions Apply)
- 10 Year Warranty available upon request, consult factory

Ordering Information (Example: RxA-100-5-VS-4K-BR-A)

Series	Wattage, Size	Distribution	Input Voltage	CCT	Finish ⁴	Mount
RxA	70 = 70W, Small	3 = Type III	HVS ^{1,2} = 347/480VAC	3K ³ = 3000K	BL = Black	A = 7" Arm
	100 = 100W, Small	4 = Type IV	VS = 120-277VAC	4K = 4000K	BR = Bronze	
	150 = 150W, Medium	5 = Type V		5K = 5000K	SV = Gray Aluminum	
	200 = 200W, Medium				WH = White	
	300 = 300W, Large					

Options	Accessories ⁶ (Field Installed)
SC ⁵ - Integral 120-277VAC Dimming Sensor (installed)	PCU = 120-277VAC Button Photocontrol for 70W and 100W models
TLPC ⁶ - 120-277VAC Twist Lock Photocontrol and Receptacle (installed on arm)	TL-MSSW = Dimming Sensor (120-277VAC)
	TL-MSSW-REMOTE = Remote for Sensor
	TLPR ⁶ = 120-277VAC Twist Lock Photocontrol and Receptacle
	TLPRH ⁶ = 347-480VAC Twist Lock Photocontrol and Receptacle
	RxA-SF = Slip fitter Mount Bronze Finish
	RxA-TR = Trunnion Mount Bronze Finish
	RxA-WM = Wall Mount Bronze Finish
	RxA-SW-BR = Swivel Mount Bronze Finish
	RxA-SF-XX ⁸ = Slip fitter Mount (XX = BL; Black, SV; Gray Alum, WH; White)
	RxA-TR-XX ⁹ = Trunnion Mount Bronze Finish (XX = BL; Black, SV; Gray Alum, WH; White)
	RxA-WM-XX ⁹ = Wall Mount Bronze Finish (XX = BL; Black, SV; Gray Alum, WH; White)
	RxA-S-HSS-BR ^{10,11} - House Side Shield, Small, Bronze Finish (70W, 100W)
	RxA-M-HSS-BR ^{10,11} - House Side Shield, Medium, Bronze Finish (150W, 200W)
	RxA-L-HSS-BR ^{10,11} - House Side Shield, Large, Bronze Finish (300W)
	RxA-SFPC-BRKT-BR ¹² = Twistlock Photocontrol Bracket for RxA-SF-XX, Bronze Finish
	RxA-SFPC-BRKT-SV ^{12,13} = Twistlock Photocontrol Bracket for RxA-SF-XX, Gray Alum Finish

- Notes**
- ¹ NOT available for 100W model
 - ² 200W Model with HVS is DLC standard qualified
 - ³ International Dark Sky approved (Compliant only with fixed downlight mount)
 - ⁴ Consult factory for other finishes, longer lead times apply
 - ⁵ Sensor mounted to the fixture, 70W and 100W models mounted to pole mount arm only
 - ⁶ Photocontrol mounts to receptacle installed on arm (arm and photocontrol installed in field)
 - ⁷ Order as separate line item - Shipped in separate box for final installation in the field
 - ⁸ Slip fitter will require RxA-SFPC-BRKT if ordering Twist Lock Photocontrol
 - ⁹ Consult factory for RxA-TR-BL and RxA-WM-BL, longer lead times apply
 - ¹⁰ Consult factory for lead times (Not required for Dark Sky approval)
 - ¹¹ House side shield must be ordered at the time of fixtures, consult factory for further details
 - ¹² Slip fitter and photocontrol sold separately
 - ¹³ Longer lead times apply

ADDITIONAL POLE MOUNTS AVAILABLE - SEE LAST PAGE FOR DETAILS

Mounting (non-standard mounts sold separately for field installation)



Swivel - RxA-SW (Sold Separately)
Allows Fixture to Swivel and Tilt
(180° total tilt, 180° total swivel)



Slipfitter - RxA-SF (Sold Separately)
For 2-3/8" O.D. Pipe. with Angle Markers

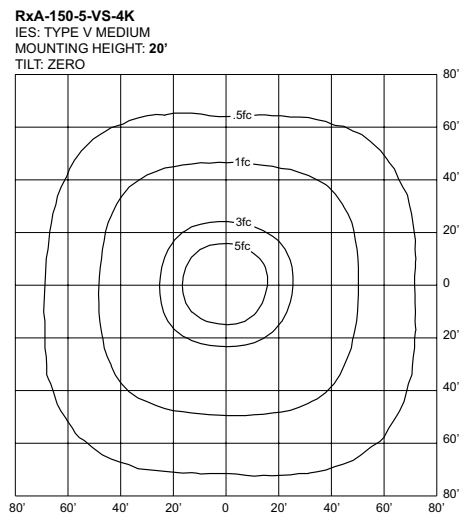
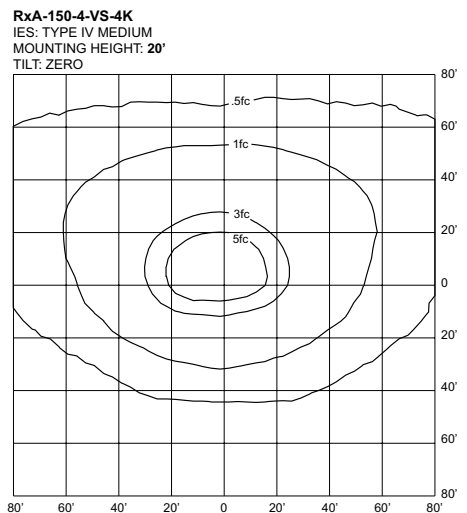
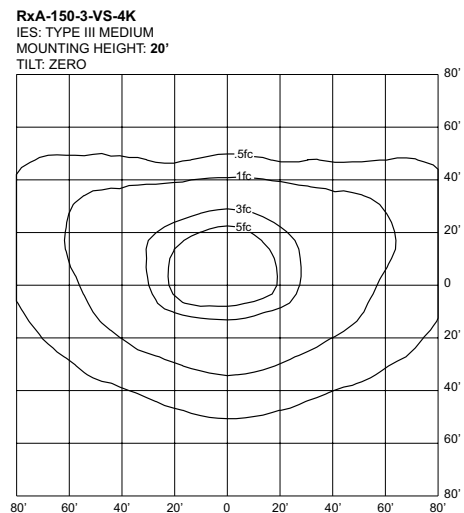


Wall Mount - RxA-WM (Sold Separately)
Allows for Direct Wall Mount



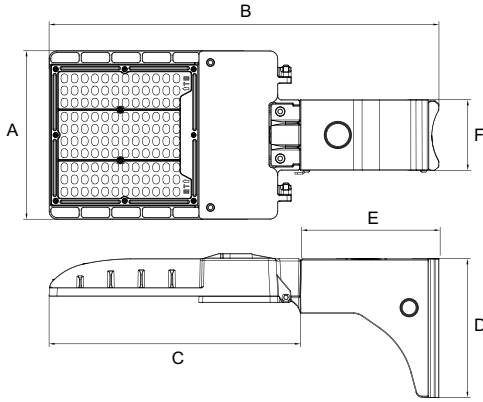
Trunnion - RxA-TR (Sold Separately)

Sample Photometry



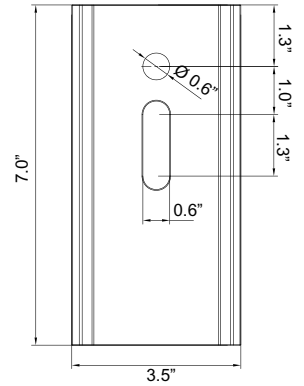
Specifications are subject to change without notice.
Installation must be performed in accordance with
Barron Lighting Group installation instructions.

Dimensions



Wattage	70/100W	150/200W	300W
Light Bars	3	3	6
A	8.5"	12.3"	12.3"
B	19.6"	21.6"	30.3"
C	12.7"	15.2"	23.3"
D	7.0"	7.0"	7.0"
E	7.0"	7.0"	7.0"
F	3.6"	3.6"	3.6"

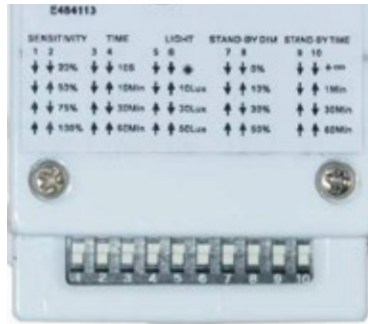
Drilling Template (Standard Mount)



Sensor Details (Option SC and Accessories TL-MSSW and TL-MSSW-REMOTE)



SC Option (Factory Installed)
TL-MSSW Accessory (Sold Separately)



Sensor Dip Switch Settings
(Dip Switches on Sensor)



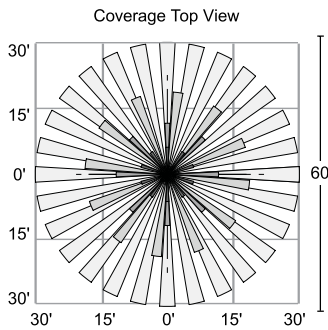
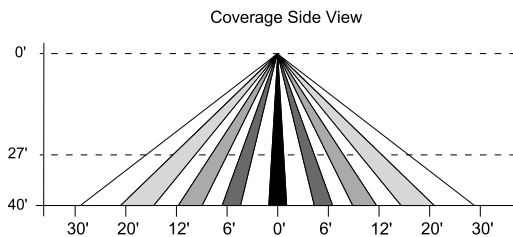
TL-MSSW-REMOTE Accessory
(Sold Separately)

Sensor Settings (Remote)

DETECTION RADIUS/ANGLE	MAX 60'/360°
MOUNTING HEIGHT	MAX 40'
REMOTE RANGE	MAX 33'
FREQUENCY	5.8 GHz
HIGH MODE	70%, 80%, 90%, 100% (DEFAULT 100%)
SENSITIVITY	20%, 50%, 75%, 100% (DEFAULT 100%)
HOLD TIME	10sec, 1min, 5min, 10min, 15min, 20min, 30min, 60min (DEFAULT 5min)
DAYLIGHT HARVESTING	☀️, (disabled), 10Lux, 30Lux, 50Lux, 100Lux, 150Lux, 200Lux, 300Lux (DEFAULT disabled)
STANDBY DIM SETTING	0, 10%, 20%, 30%, OFF (∞), (DEFAULT 30%)
STANDBY TIME SETTING (TO OFF)	ON (disabled), 1min, 30min, 60min (DEFAULT 30min)



Sensor Coverage



360° Coverage

Specifications are subject to change without notice.
Installation must be performed in accordance with
Barron Lighting Group installation instructions.


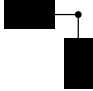
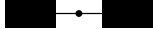
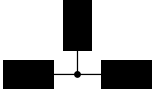
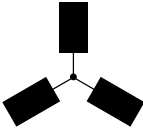
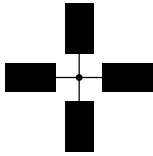
Twistlock Photocontrol Bracket for Slipfitter Mount (Accessory: RxA-SFPC-BRKT-XX)



RxA-SFPC-BRKT-BR installation.
Slipfitter and photocontrol sold separately



EPA Values

						
Model	1	2 @ 90°	2 @ 180°	3 @ 90°	3 @ 120°	4 @ 90°
70W/100W	0.3413	0.5929	0.6826	1.0239	1.0499	1.0239
150W/200W	0.423	0.735	0.846	1.158	1.185	1.158
300W	0.4759	0.7889	0.9518	1.2648	1.3711	1.2648

Pole Top Arms

	<p>RT2-90-2-BR Round pole 90° tenon - 2 arms</p> <p>Vertical steel tenon adaptor to mount over a 2-3/8" O.D. round pole, two arms, 90°. Bronze finish.</p>		<p>RT2-120-3-BR Round pole, 120° tenon - 3 arms</p> <p>Vertical steel tenon adaptor to mount over a 2-3/8" O.D. round pole, three arms, 120°. Bronze finish.</p>
	<p>RT2-180-2-BR Round pole 180° tenon - 2 arms</p> <p>Vertical steel tenon adaptor to mount over a 2-3/8" O.D. round pole, two arms, 180°. Bronze finish.</p>		<p>RT2-90-4-BR Round pole, 90° tenon - 4 arms</p> <p>Vertical steel tenon adaptor to mount over a 2-3/8" round pole, four arms, 90°. Bronze finish.</p>
	<p>RT2-90-3-BR Round pole 90° tenon - 3 arms</p> <p>Vertical steel tenon adaptor to mount over a 2-3/8" O.D. round pole, three arms, 90°. Bronze finish.</p>		

Tenon Adaptors

	<p>ST4-BR Square tenon 4" 2-3/8" O.D. steel tenon adaptor to fit into 4" square pole. Includes 4x 5/16" hex stainless steel bolts. Bronze finish.</p>		<p>RT4-BR Round tenon 4" 2-3/8" O.D. steel tenon adaptor to fit over 4" round pole. Not suitable for tapered poles. Includes 3x 3/8" hex stainless steel bolts. Bronze finish.</p>
	<p>ST5-BR Square tenon 5" 2-3/8" O.D. steel tenon adaptor to fit into a 5" square pole. Includes 4x 5/16" hex stainless steel bolts. Bronze finish.</p>		<p>RT5-BR Round tenon 5" 2-3/8" O.D. steel tenon adaptor to fit over 5" round pole. Not suitable for tapered poles. Includes 3x 3/8" hex stainless steel bolts. Bronze finish.</p>
	<p>YM-T-BR Yoke mount tenon adaptor 2-3/8" O.D. steel tenon adaptor for use with yoke mount accessory. Bronze finish.</p>		

Wall Mount Adaptors

	<p>WM-T-90-BR Wall mount 90° tenon 2-3/8" O.D. steel tenon adaptor with 90° arm for wall mount applications, for use with slipfitter accessory. Bronze finish. 3-1/4" Spacing between mounting holes.</p>		<p>WM-T-S-BR Wall mount straight tenon 2-3/8" O.D. steel tenon adaptor arm for wall mount applications, for use with slipfitter accessory. Bronze finish.</p>
---	--	--	--

DESCRIPTION

The SCP-S is a low-profile 12" surface mount square canopy with a variety of precision engineered optics for application flexibility. This canopy optimizes optical performance and long-life with superior thermal management in an attractive and durable die-formed aluminum enclosure with a premium PMMA lens that does not yellow over time. This product can be easily surface or pendant mounted and is the ideal energy saving solution for applications including, but not limited to, parking garages, schools, office complexes, light commercial development, apartments, walkways, entryways and stairwells.

CONSTRUCTION

- Precision die-formed aluminum enclosure and backplate with stainless steel hardware
- White powder coat finish, custom colors available upon request
- IP65 rated light engine compartment
- Single 3/4" side knockout

OPTICS/LEDS

- UV-stabilized polymethyl methacrylate (PMMA) optics that will not yellow over time
- Garage optics provides a type V short symmetric square distribution with light focused in the 60° to 80° zones to optimize spacing with even light distribution
- Performance optic provides a type VS (square) very short distribution and offers more light in the 30° to 60° zones, ideal for higher mounting heights over 12'
- Low glare optic provides excellent Type VS (square) short distribution with exceptional glare control
- From 20W to 67W with up to 9016 lumens for maximum project flexibility
- Efficacies up to 134 LPW maximize energy savings and utility rebates
- 4000K CCT and 5000K CCT
- L70 of 190,000 hours
- CRI ≥71

ELECTRICAL

- 120-277VAC, 50/60Hz
- 0-10V Dimming driver

INSTALLATION

- Fixture enclosure is attached to backplate by four white fasteners
- Backplate easily attaches to a recessed 3" or 4" J-box
- Pendant mounted using standard 1/2" downrod and hardware (supplied by others)

OPTION

- Integral battery backup (BB) offers over 900 lumens and 90 minutes of runtime for path of egress. Rated for ambient temperatures between 0°C to 40°C (32°F to 104°F). Battery backup option available on the SCP-S-20-P-VS-4K-WH only.

TESTING & COMPLIANCE

- cETLus Listed to UL1598 for Wet Locations for covered canopy applications
- Operating temperatures: -40°C to 40°C (-40°F to 104°F)

WARRANTY

- Five year warranty (terms and conditions apply)

Model: _____ Date: _____
Accessories: _____
Job Name: _____ Type: _____



Specs At A Glance*				
Wattage (W)	20	36	50	67
Lumens (lm)	2670	4815	6586	8940
Efficacy (LPW)	130	133	131	133
Equivalency (HID)	70W	100W	150W	250W
Distribution	Garage (G) - Type VS Square Short Low Glare (LG) - Type VS Square Short Performance (P) - Type VS Square Very Short			
CCT	4000K, 5000K			
CRI	≥71			
Input Voltage	120-277VAC, 50/60Hz, 0-10V Dimmable			
Operating Temp	-40°C to 40°C (-40°F to 104°F)			
Certifications	cETLus Listed, Wet Locations Covered Canopy			
Warranty	5 Years			
Weight	7.0 lbs			

ORDERING INFORMATION

Example: SCP-S-20-P-VS-4K-WH-BB

Series	Wattage	Optics	Input Voltage	CCT	Finish	Options
SCP-S	20 = 20 Watts	G ¹ = Garage	VS = 120-277V	4K = 4000K	WH = White	BB ⁴ = Battery Backup
	36 = 36 Watts	LG = Low Glare		5K ¹ = 5000K	CC ³ = Custom Color	
	50 ¹ = 50 Watts	P ² = Performance				
	67 ¹ = 67 Watts					
						Accessories⁵ (Field Installed)
						MC-TR16 = 16" Transition Plate, White Finish
						MC-TR24 ¹ = 24" Transition Plate, White Finish
Notes						

¹ Non-stocked item, longer lead times apply, consult factory for details

² While supplies last

³ Consult factory for details

⁴ 120V and 277V operation, 0-10V dimming not available, not ETL Listed, available on SCP-S-20-P-VS-4K-WH model only

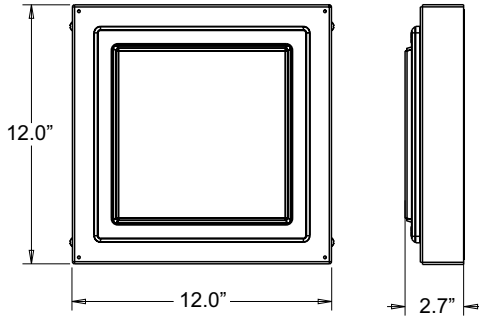
⁵ Order as separate line item

PERFORMANCE DATA

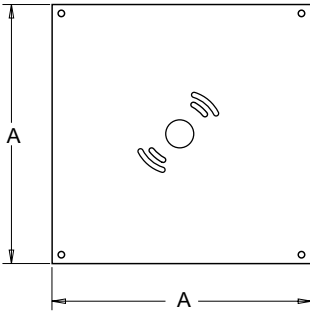
MODEL	STOCK/MTO*	WATTAGE (W)	CCT	LUMENS	EFFICACY	CRI
SCP-S-20-LG-VS-4K	STOCK	20	4000K	2352	115	72
SCP-S-20-G-VS-4K	MTO	20	4000K	2543	124	72
SCP-S-20-P-VS-4K	STOCK	20	4000K	2670	130	72
SCP-S-20-LG-VS-5K	MTO	20	5000K	2350	114	73
SCP-S-20-G-VS-5K	MTO	20	5000K	2533	123	72
SCP-S-20-P-VS-5K	MTO	20	5000K	2670	129	72
SCP-S-36-LG-VS-4K	STOCK	36	4000K	4227	117	72
SCP-S-36-G-VS-4K	MTO	36	4000K	4582	126	72
SCP-S-36-P-VS-4K	STOCK	36	4000K	4815	133	72
SCP-S-36-LG-VS-5K	MTO	36	5000K	4282	118	73
SCP-S-36-G-VS-5K	MTO	36	5000K	4601	126	73
SCP-S-36-P-VS-5K	MTO	36	5000K	4839	133	73
SCP-S-50-LG-VS-4K	MTO	50	4000K	5702	114	72
SCP-S-50-G-VS-4K	MTO	50	4000K	6306	125	72
SCP-S-50-P-VS-4K	MTO	50	4000K	6586	131	72
SCP-S-50-LG-VS-5K	MTO	50	5000K	5590	112	72
SCP-S-50-G-VS-5K	MTO	50	5000K	6168	123	72
SCP-S-50-P-VS-5K	MTO	50	5000K	6472	130	72
SCP-S-67-LG-VS-4K	MTO	67	4000K	7829	117	72
SCP-S-67-G-VS-4K	MTO	67	4000K	8466	126	72
SCP-S-67-P-VS-4K	MTO	67	4000K	8940	133	72
SCP-S-67-LG-VS-5K	MTO	67	5000K	7887	118	72
SCP-S-67-G-VS-5K	MTO	67	5000K	8589	128	71
SCP-S-67-P-VS-5K	MTO	67	5000K	9016	134	72

*MTO = Made to order (subject to change, consult factory for lead times)

DIMENSIONS



TRANSITION PLATE DETAILS



Accessory	A
MC-TR16	16"
MC-TR24	24"

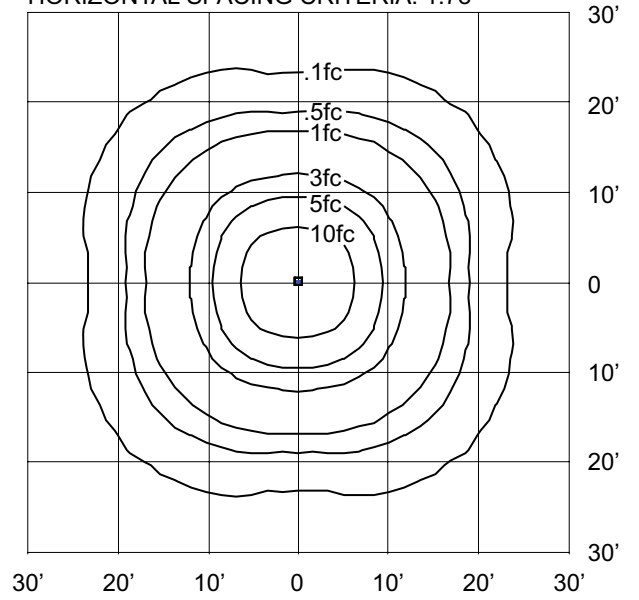
SAMPLE PHOTOMETRICS

SCP-S-36-P-VS-4K

IES: Type VS Square Very Short

MOUNTING HEIGHT: 10'

HORIZONTAL SPACING CRITERIA: 1.78



DESCRIPTION

The WLZ Series features an architecturally relevant low-profile LED design in lumen packages ranging from 1500 lumens to over 12,000 lumens. Its high-efficiency light engine is designed for optimal light control and distribution with zero uplight. This family of product is offered in several size housings to complement any building exterior and accommodates mounting heights up to 35'. Integral emergency battery backup available for path of egress with Cold Location operation down to -20°C.

SPECIFICATIONS

Construction

- Sleek die-cast aluminum housing with stainless steel hardware and powder coated black, bronze, silver or white finish
- UV-stabilized polycarbonate optical lens
- Integral heat sink for maximized heat dissipation
- Back box houses drivers away from LEDs and includes three 3/4" hubs (WLZ1 and WLZ2 - two 3/4" hubs)

Optics/LEDs

- Zero uplight design to minimize light pollution
- 15 to 100 Watt models replace up to 400 Watt HID for up to 70% energy savings
- Efficacies up to 123 LPW at 5000K to maximize utility rebates
- Type III and Type IV distributions for optimal light distribution (WLZ1 - Type III only)
- Available in 3000K, 3500K, 4000K and 5000K CCT
- L70 of 50,000 hours at 40°C
- CRI of ≥70

Electrical

- Class 2 power supply, 120-277VAC, 50/60Hz
- 347/480VAC Dedicated driver option for WLZ4, WLZ7 and WLZ10
- 0-10V Dimming driver (120-277VAC only)
- Power supply rated Class A EMI rating

Installation

- Housing hinges to back box and is secured with set screws
- Back box is complete with three 3/4" hubs and internal bubble level for easy installation (WLZ1 and WLZ2 - two 3/4" hubs)
- Mounts to a standard 3-1/2" or 4" square electrical J-box
- Suitable for downlight installation only

Options

Battery Backup

- Integral battery backup (BB) provides over 700 lumens and 90 minutes of runtime for path of egress. Rated for ambient temperatures of 0°C to 40°C (32°F to 104°F). Not available on WLZ1
- Integral Battery Backup with Internal Heater (BB-IH) provides over 700 lumens and 90 minutes of runtime for path of egress in Cold Locations down to -20°C. Not available on WLZ1 or WLZ2.
- Factory installed dual driver options for WLZ4 and WLZ10 (WLZ7 is standard with two drivers)
- Factory installed 120/277VAC button type photocontrol option (PC)
- Factory installed 10kVA surge protection options (SP or SPH)

Accessories (Field Installed)

- 120/277VAC Button type universal photocontrol options accessory (PCU)
- Dimming occupancy sensor programmable, Wattstopper FSP221 available in multiple finishes (TL-SCES-L2)
- Remote control for occupancy sensor. Optional (TL-FSIR100)

Testing & Compliance

- cULus Listed for Wet Locations
- International Dark Sky friendly approved product. (IDA) 3000K only
- Operating temperatures: -40°C to 40°C (-40°F to 104°F)

Warranty

- Five year warranty (terms and conditions apply)

Model: _____ Date: _____
 Accessories: _____
 Job Name: _____ Type: _____



Specs At A Glance*					
Model	WLZ1	WLZ2	WLZ4	WLZ7	WLZ10
Wattage (nominal)	15W	25W	40W	70W	100W
Lumens (lm)	1745	3198	5021	8729	12,393
Efficacy (LPW)	115	118	123	120	116
Equivalency (HID)	50W	100W	150W	250W	400W
Distribution	Type III, IV (WLZ1 Type III only)				
CCT	3000K, 3500K, 4000K, 5000K				
CRI	≥70				
Input Voltage	120-277VAC, 50/60Hz, 347/480V option				
Operating Temp	-40°C to 40°C (-40°F to 104°F)				
Certifications	UL Listed for Wet Locations, IDA				
Warranty	5 Years				
Weight	2.6 lbs	3.3 lbs	6.0 lbs	9.9 lbs	12.1 lbs

* Nominal Wattage, tested at 5000K CCT, Type III distribution. Values at 120/277VAC. See performance table for more detailed lumen information.

Note: Environment and application will affect actual performance. Typical values and 25°C (77°F) used for testing. Specifications subject to change without notice.

Ordering Information (Example: WLZ2-3-4K-BR)

Series/Configuration	Distribution	Input Voltage	CCT	Finish	Options
WLZ1 = 15W, Extra-Small	3 = Type III	BLANK = 120/277VAC	3K = 3000K	BL = Black	BB ⁵ = Battery backup
WLZ2 = 25W, Small	4 ² = Type IV	HVS ³ = 347/480VAC	35K ⁴ = 3500K	BR = Bronze	BB-IH ⁶ = Cold Location Battery backup (operation down to -20°C)
WLZ4 = 40W, Medium			4K = 4000K	SV = Silver	DD ⁷ = Dual driver
WLZ7 ¹ = 70W, Large			5K = 5000K	WH = White	PC = 120/277VAC Button photocontrol
WLZ10 = 100W, Extra-Large					SP = 120/277VAC Surge protection SPH = 347/480VAC Surge protection

Notes

¹ Standard with two drivers

² Not available for WLZ1 configuration

³ WLZ4, WLZ7 and WLZ10 only, compatible with SPH option only

⁴ Consult factory for lead times

⁵ WLZ2, WLZ4, WLZ7 and WLZ10 only. 120/277VAC Only. Not compatible with DD and SPH options

⁶ WLZ4, WLZ7 and WLZ10 only. 120/277VAC Only. Not compatible with DD and SPH options

⁷ Dual driver option available for WLZ4 and WLZ10 only. Not compatible with photocontrol option, consult factory

⁸ Compatible with WLZ4, WLZ7 and WLZ10 only. Contact factory for compatibility with other options

⁹ Dimming occupancy sensor, programmable, Wattstopper FSP221, L2 Lens

¹⁰ Order as a separate line item. Shipped in separate box for final installation in the field

Accessories¹⁰ (Field Installed)

PCU = 120/277VAC Button photocontrol accessory

TL-FSIR-100 = Remote control for TL-SCES sensor (optional)

TL-SCES-L2^{8,9} = Motion sensor, white finish

TL-SCES-L2-BL^{8,9} = Motion sensor, black finish

TL-SCES-L2-BR^{8,9} = Motion sensor, bronze finish

TL-SCES-L2-GR^{8,9} = Motion sensor, gray finish

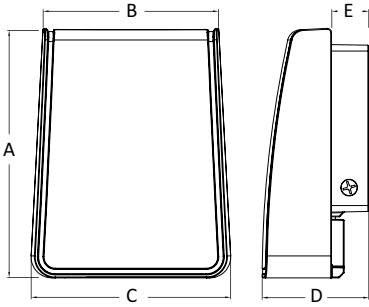
Performance Data

Model	Wattage (W)	CCT	Distribution	Lumen Output (lm)	Efficacy (LPW)
WLZ1-3-3K-XX	15	3000K	Type III	1531	101
WLZ1-3-4K-XX	15	4000K	Type III	1534	101
WLZ1-3-5K-XX	15	5000K	Type III	1745	115
WLZ2-3-3K-XX	25	3000K	Type III	2795	103
WLZ2-3-4K-XX	25	4000K	Type III	2997	111
WLZ2-3-5K-XX	25	5000K	Type III	3198	118
WLZ2-4-3K-XX	25	3000K	Type IV	2609	98
WLZ2-4-4K-XX	25	4000K	Type IV	2797	105
WLZ2-4-5K-XX	25	5000K	Type IV	2985	112
WLZ4-3-3K-XX	40	3000K	Type III	4389	107
WLZ4-3-4K-XX	40	4000K	Type III	4705	115
WLZ4-3-5K-XX	40	5000K	Type III	5021	123
WLZ4-4-3K-XX	40	3000K	Type IV	4021	98
WLZ4-4-4K-XX	40	4000K	Type IV	4310	105
WLZ4-4-5K-XX	40	5000K	Type IV	4599	112
WLZ7-3-3K-XX	70	3000K	Type III	7657	105
WLZ7-3-4K-XX	70	4000K	Type III	8193	113
WLZ7-3-5K-XX	70	5000K	Type III	8729	120
WLZ7-4-3K-XX	70	3000K	Type IV	6837	94
WLZ7-4-4K-XX	70	4000K	Type IV	7316	101
WLZ7-4-5K-XX	70	5000K	Type IV	7794	107
WLZ10-3-3K-XX	100	3000K	Type III	10,871	102
WLZ10-3-4K-XX	100	4000K	Type III	11,632	109
WLZ10-3-5K-XX	100	5000K	Type III	12,393	116
WLZ10-4-3K-XX	100	3000K	Type IV	9706	91
WLZ10-4-4K-XX	100	4000K	Type IV	10,385	98
WLZ10-4-5K-XX	100	5000K	Type IV	11,065	104

* Nominal Wattage. Values at 120/277VAC

** HVS configuration not DLC qualified

Dimensions

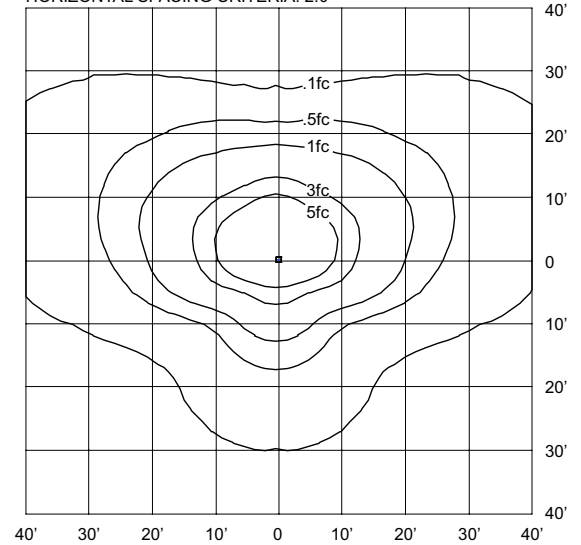


Model	A	B	C	D	E
WLZ1	6.7"	5.0"	5.6"	3.2"	1.4"
WLZ2	8.0"	5.7"	6.0"	3.2"	1.4"
WLZ4	10.2"	6.8"	7.8"	5.0"	1.9"
WLZ7	11.6"	8.3"	9.4"	5.0"	1.9"
WLZ10	11.6"	10.3"	11.5"	5.0"	1.9"

Sample Photometrics

WLZ4-3-5K

IES: TYPE III VERY SHORT
 MOUNTING HEIGHT: 10'
 TILT: ZERO
 HORIZONTAL SPACING CRITERIA: 2.0

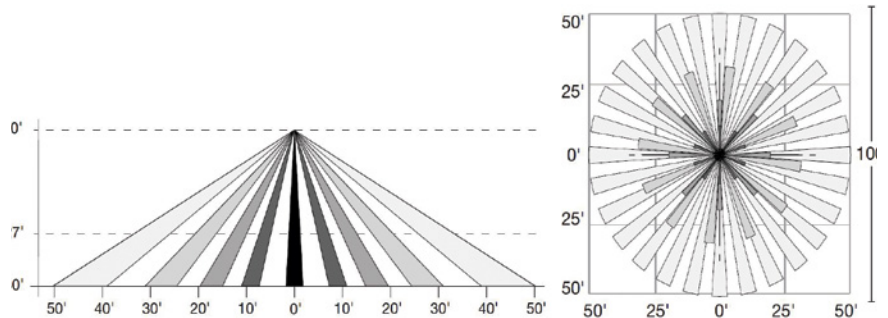


Sensor Details (Accessory: TL-SCES-L2)



Side and Top Sensor Coverage Pattern:

With FSP-L7 lens (included) 360° lens



Settings for TL-SCES-L2

	Settings	Default
High Mode:	0-10V	10V
Low Mode:	Off, 0-9.8V	1V
Time Delay:	30 seconds; 5-30 minutes	5 Minutes
Cut Off Delay:	None, 1-60 Minutes, 1-5 hours	1 Hour
Sensitivity:	None, Low, Medium, Max	Max
Setpoint:	None, 1-250fc, Auto	Disabled
Ramp Up Time:	None, 1-60 Seconds	Disabled
Fade Down Time:	None, 1-60 Seconds	Disabled

NOTE:

To change settings in the field, please order TL-FSIR-100 controller.

